

Bank Joseph, Oliveira of John P. Former Line of Jos. S. Phillips

Inlet with grate
 11' x 6' x 6" gully
 Existing F.P. = 6' 5"

C.E.S. FURNITURE CO.

J.S.D. SANTOS #383

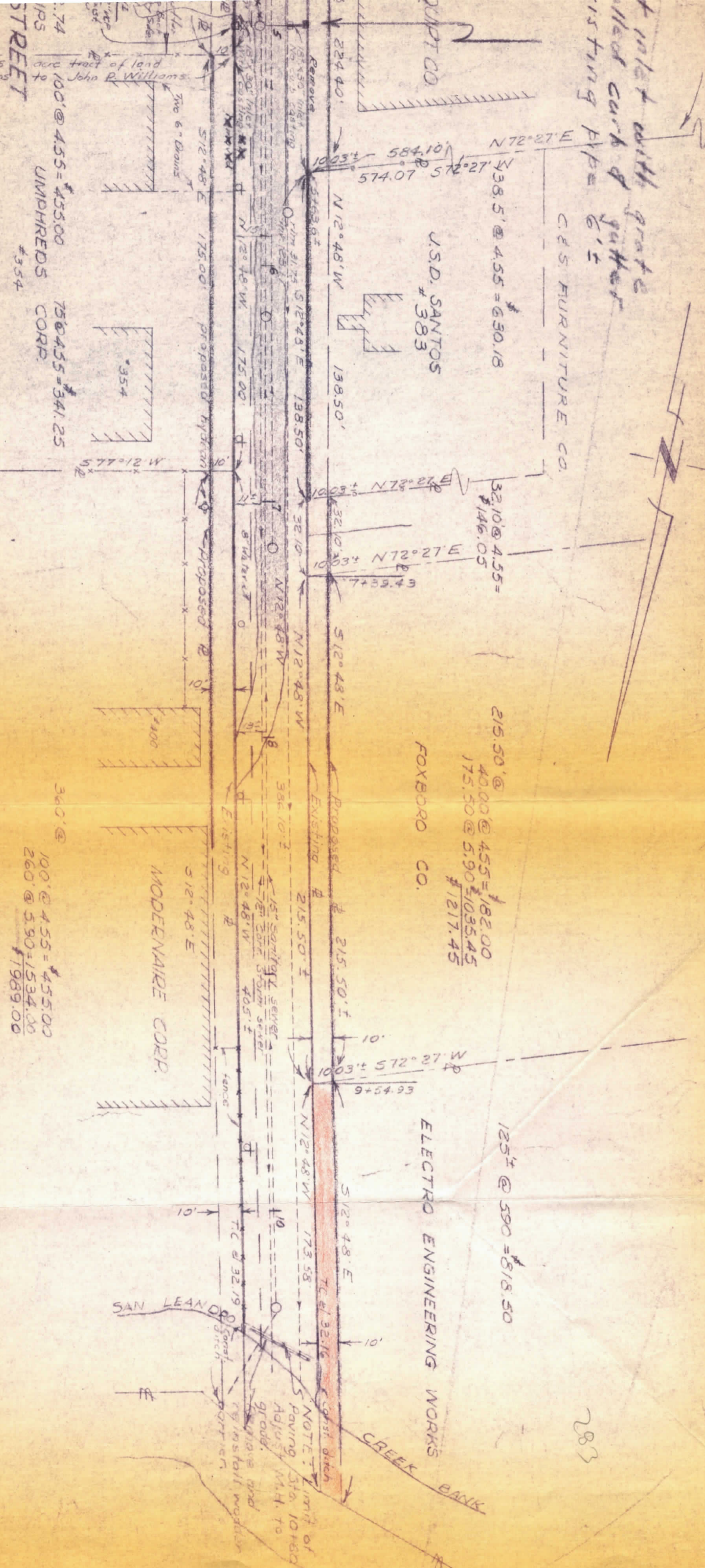
FOXBORO CO.

ELECTRO ENGINEERING WORKS

CREEK BANK

STREET IMPROVEMENT 7 1/2' wide @ 2.05 per lin. ft.
 STREET IMPROVEMENT 13 1/2' wide @ 3.40 per lin. ft.
 CURB & GUTTER @ 2.50 per lin. ft.

283



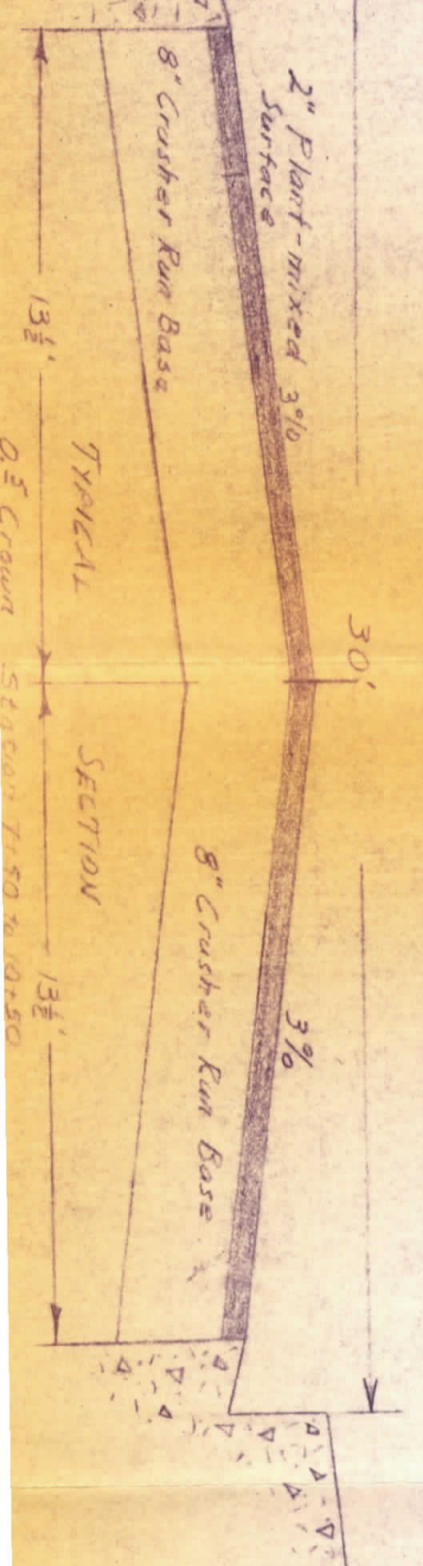
Southwestern corner of the 5.15 acre tract of land conveyed by Manuel P. Williams to John P. Williams

STREET

100' @ 4.55 = \$455.00
 UMPHREDS #354
 75 @ 4.55 = \$341.25
 CORP.

360' @ 100' @ 4.55 = \$455.00
 260' @ 5.90 = \$1534.00
 \$1989.00

Note: Use standard 30" rolled curb & gutter



SAN LEANDRO

NOTE: Limit of paving Sta. 10+00 Adj. drive and grove and install gutter